

These are some of our support intervention staff:



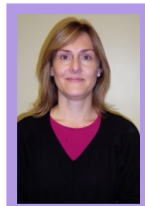
Mrs Johnson
Speech &
Language
Specialist LSA



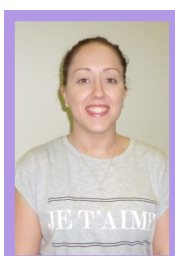
Mrs Kitchener
Speech &
Language
Specialist LSA



Mrs Lione
1stClass@ Number
Specialist LSA



Mrs Philbey & Mrs Stubbs
FFT Specialist LSAs



Mrs Cole, Miss Doo, Mrs Moore & Miss Hanmore
Dyslexia Indicator Assessment LSAs



Mrs Baker
EY SENCO



Mrs Pearce
Lead SENCO

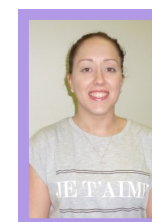


Mrs Warland
Assistant
SENCO

Meet the SEN & Pastoral Support Teams



Miss Watts
Pastoral
Support



Miss Hanmore
Learning
Mentor



Mrs Davis
Family Support
Worker



Mrs Batt
SEN Admin Assistant

How does White Hall Academy identify a pupil with Special Educational Needs?

We work closely with class teachers to identify those pupils who are having some difficulty in school.

We will observe and assess children to identify how the school can help them to make progress.

When Special Educational Need (SEN) support is needed, we will meet with parents and teachers to talk about what works well and what is not working. If your child needs SEN Support we will meet with your child's class teacher to complete a Personal Support Plan (PSP) showing how your child is being supported and arrange to meet with you to discuss how your child is getting on and discuss any concerns you or the teacher may have.

You might be familiar with IEPs (Individual Education Plan) these have been replaced by the PSPs (Personal Support Plan) so that everyone is very clear about exactly how much support your child is getting and who this support is from.

The regular PSP meetings will hopefully help to keep you up to date with how your child is being supported and allows for any concerns you have to be recorded, discussed and addressed.

Where can I find out more information about Special Educational Needs?

There are lots of websites where you can find out more about SEN.

You might find these helpful to start with:

www.essexlocaloffer.org.uk
www.specialneedsjungle.com
www.extrasupportforfamilies.co.uk
autismparentsupport.org
www.autism-anglia.org.uk
www.specialkidsintheuk.org
www.youngminds.org.uk

Our school's SEN Information Report can be found on the White Hall Academy website www.whitehallacademy.co.uk. The support section can be found under the Wellbeing heading.

We plan to send out a SEN/Pastoral Support Newsletter once a term, to keep you up to date with any new support information. If you have any ideas for features or information you would like to see in this newsletter, please let us know, we welcome any ideas you might have.

What do I do if I am concerned about my child?

The best first step is to talk to your child's class teacher.

Contact the SENCO, Assistant SENCO or the Early Years SENCO. We take responsibility for supporting different year groups.

This table is to help you know who to contact:

	N	R	Y1	Y2	Y3	Y4	Y5	Y6
Mrs Cole (Head of Nursery)	X							
Mrs Baker		X	X					
Mrs Warland			X	X	X			
Mrs Pearce					X	X	X	X

Mrs Warland and Mrs Pearce take over responsibility for Years 1 and 3 respectively in the Spring Terms.

There is usually always a member of the support team available who will be happy to help or pass on a message should your named supporting SENCO/Assistant SENCO be unavailable.

You can contact us on the school telephone number: 01255 422825

Or you can email us at:

support.enquiries@whitehallacademy.essex.sch.uk

How is my child assessed for Special Educational Needs?

Once we receive a concern, from either you or the class teacher, we carry out classroom and/or playground observations as well as assessments around reading, writing, maths, working memory, processing speeds, speech and language as well as looking at any social and emotional wellbeing needs.

We then look at what could be stopping your child from making progress and provide advice to class teachers and any supporting staff.

If the assessments show that your child has a Special Educational Need then we will arrange to meet with you and your child's teacher to put together a PSP. We always involve the child by listening to their views and also encourage them to think about how they can also help themselves, to encourage their independent skills.

What is classed as a Special Educational Need?

From September 2014, there have been new guidelines about how SEN is classed. A child has a Special Educational Need if they:

have a significant greater difficulty in learning than the majority of others of the same age

or

have a physical or mental impairment which has a substantial and long term adverse effect on their ability to carry out normal day to day activities.

A child may be disabled and NOT have Special Educational Needs (SEN) and a child may have SEN and NOT be disabled.

What are the Special Educational Needs areas of need?

As from September 2014, there are four areas of need:

Communication and Interaction

This includes:

- Speech, Language and/or Communication Needs
- Autistic Spectrum Disorder

Cognition and Learning

This includes:

- Moderate Learning Difficulties
- Specific Learning Difficulties (including Dyslexia or Dyspraxia)

Sensory and/or Physical Needs

This includes:

- Visual Impairment
- Hearing Impairment
- Physical Disabilities

Social, Emotional and Mental Health needs

This category of need was previously known as Behaviour, Emotional and Social Difficulties. It has been changed so that the focus is upon looking at the reason behind any behaviour difficulties rather than the negative behaviours. This category includes pupils diagnosed with ADHD.

You might be familiar with the terms School Action and School Action Plus. These described the level of SEN a child had. These terms have been replaced by a single category of SEN Support.

What are Education, Health and Care Plans (EHCPs)?

Under the old SEN system, if a child needed support above 12.5 hours per week then they would be assessed for a Statement of Educational Need. These statements have been replaced by Education Health Care Plans (EHCPs) and support a child when they are not making the expected progress. Please note: a medical diagnosis does NOT mean that a child is automatically entitled to an EHCP.

How does White Hall Academy support a child with Special Educational Needs?

The type of support provided for your child will depend upon their area of need and support is personalised to meet their individual difficulties. There are many ways of supporting your child, including a Learning Support Assistant supporting within the classroom, or working with your child on a specific intervention.

These are some of the support interventions currently available at White Hall Academy:

- Catch Up reading programme
- Lexia literacy support programme
- Literacy Toolbox
- FFT (Family Fischer Trust) literacy support
- 1stClass @ Number maths support
- Narrative Therapy speech & language programme
- Social Skill development programmes
- Gym Trail
- Sensory Gym Trail
- Visual stress screening
- CogMed memory training
- Numicon maths support apparatus
- Letters & Sounds phonics development
- Bereavement Club
- Breakfast Nurture Club
- Lunchtime Lego Nurture Club